

Studio Schu

tactile stations in museums

Instagram @studioschu



3d tactile models

- Made of similar material
- Durable and safe design
- Easily accessible



Tactile models for painting

- Preserve the language of the original artwork
- Tactile control during the process of creating
- Easy care





Jewish Museum & Tolerance Center

ВСТВА
ФЕКТЫ
МОЦИИ
РАСТИ

FEELINGS
EMOTIONS
PASSIONS

ЛЮДЕЙ ВСЕГДА
ИНТЕРЕСОВАЛО,
ЧТО ЭТО ТАКОЕ

PEOPLE HAVE ALWAYS
WONDERED WHAT
EXACTLY THEY ARE

КАК ИХ НАЗВАТЬ?
ГДЕ ОНИ
НАХОДЯТСЯ?

HOW TO NAME THEM
WHERE THEY ARE

В ГОЛОВЕ? В СЕРДЦЕ?
В ЖИВОТЕ?
МОЖНО ЛИ ИМИ
УПРАВЛЯТЬ?

IS IT IN YOUR HEAD?
IN YOUR HEART?
IN THE GUT?
CAN WE CONTROL THEM?

ОНИ У КАЖДОГО СВОИ
ИЛИ ВСЕ ЧУВСТВУЮТ
ОДНО И ТО ЖЕ?

ARE THEY DIFFERENT
FOR EACH ONE OF US,
OR DO WE ALL FEEL
THEM THE SAME?

SCHADENFREUDE
ШАДЕНФРОЙДЕ (НЕМЕЦКИЙ)
УДОВОЛЬСТВИЕ ПРИ ВИДЕ ЧУЖИХ ПРОБЛЕМ

GIGIL
ГИГИЛ (ТАГАЛЬСКИЙ, ФИЛИПТИНЫ)
ОСТРЫЙ ПРИСТУП УМИЛЕНИЯ,
НЕКОНТРОЛИРУЕМОЕ ЖЕЛАНИЕ ПОЩЕКОТАТЬ
И ПОЩЕКОТАТЬ

MALI
МАЛИ (ИНДОНЕЗИЙСКИЙ)
ЗНАКЕТ ДЕРЕВНИ ДРУЗЬ БАГУК
КОГДА СТОИШЬ РЯДОМ С КЕМ-ТО БАКЖИМ
И УКАЗОМ НЕ ТРОУНУТЬСЯ

GIGIL (TAGALOG, THE PHILIPPINES)
AN ACUTE ATTACK OF TENDERNESS: AN
UNCONTROLLABLE DESIRE TO CURSLE AND TICKLE

ПЛОК (ИНУКТИТУТ,
АДСКИХ ИНУТОВ)
НЕНИЕ, КОГДА ЖДЕШЬ ДРУЗЕЙ,
Т

АЙНИНГ,
СТОТА

NG, P
UE AN
A

exhibition
“Playing with Masterpieces:
from Henri Matisse to Marina Abramovic”



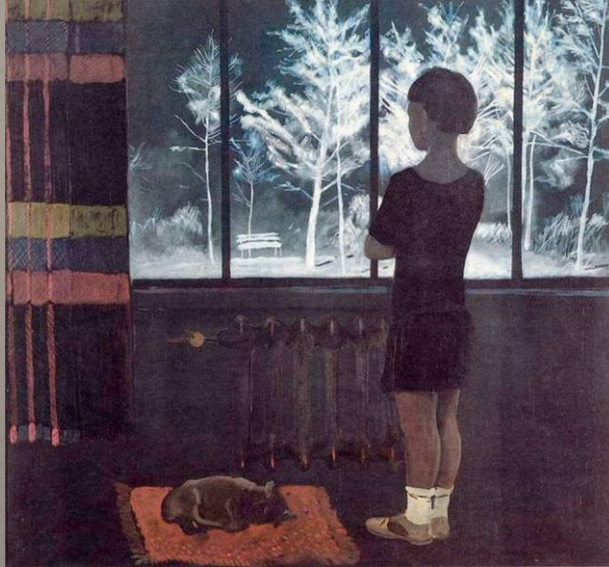
Tactile models for the exhibition “Playing with Masterpieces: from Henri Matisse to Marina Abramovic” created with the support of the program Special View of The Foundation Art Science And Sport



Tactile model of Yves Klein's "Pink sponge relief"



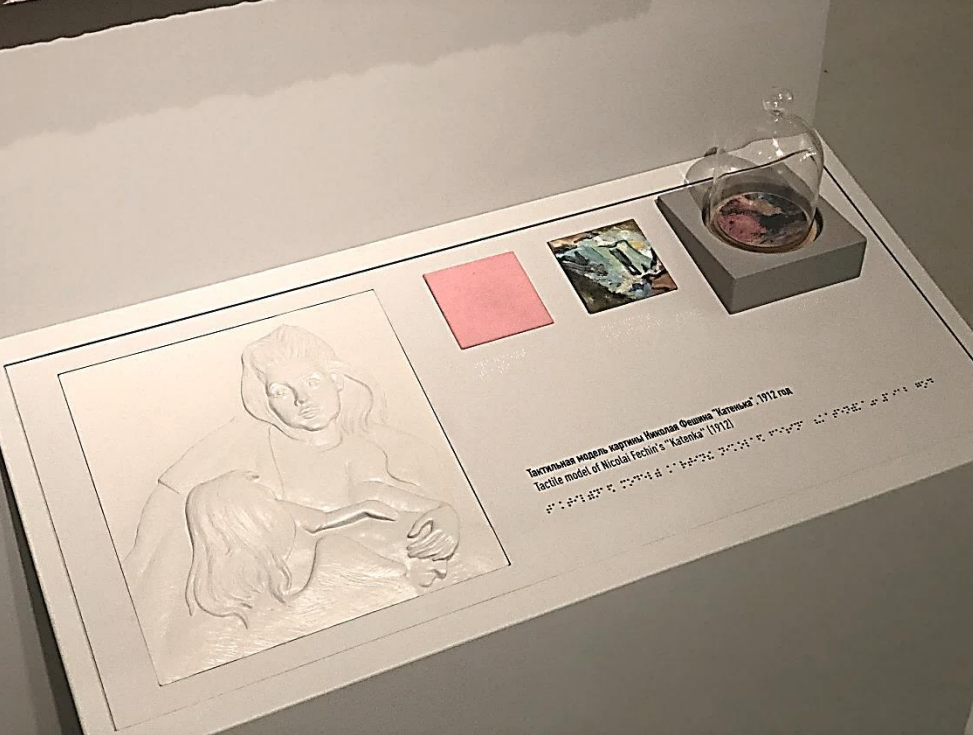
The process of creating tactile models of Niko Pirosmani's "Lion and the sun"
Steel saber & color painted model



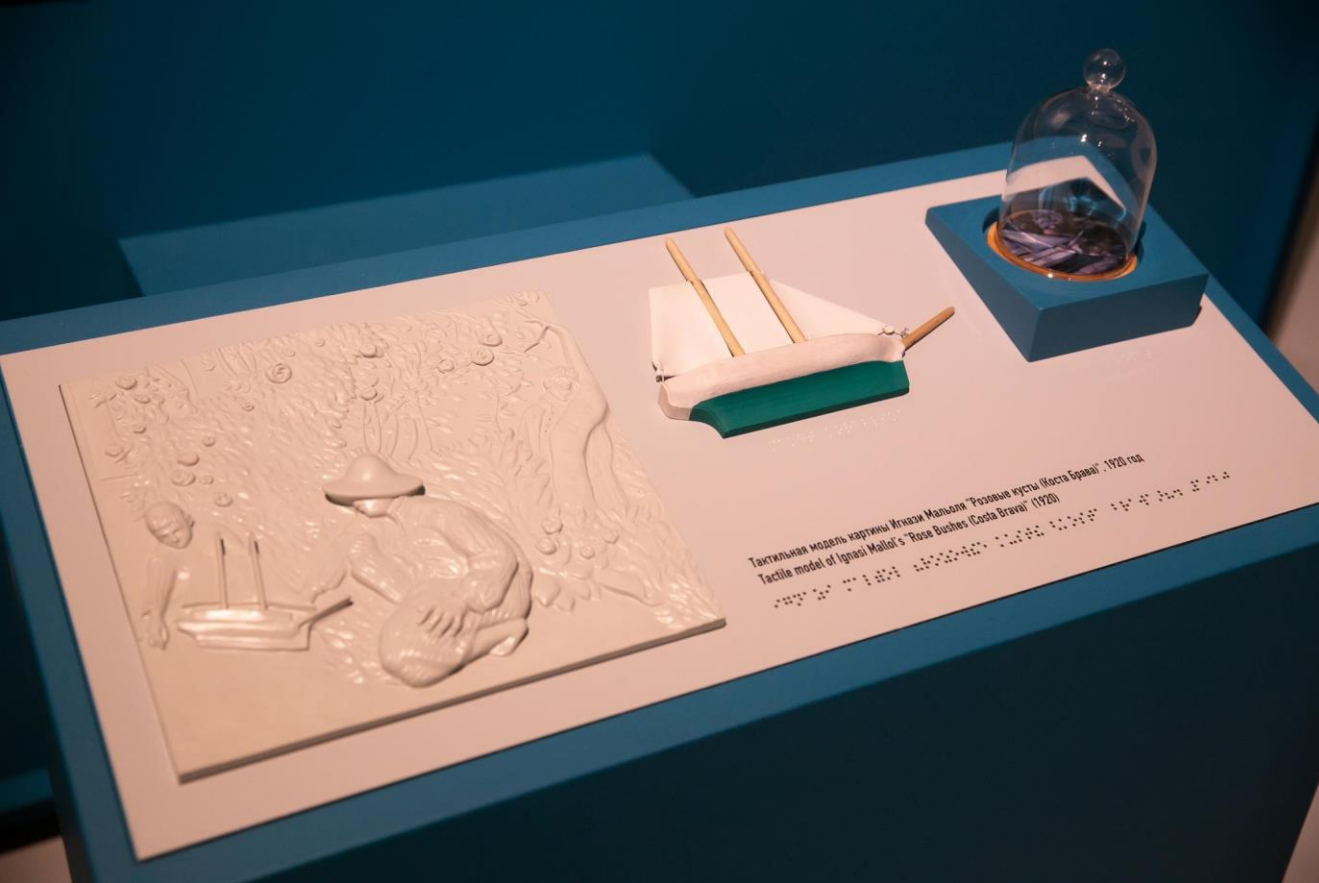
Tactile models of Aleksandr Deyneka's "The girl at the window. Winter"
Color painted model and model with "warm" and "cold" samples



Tactile model of Nikolay Mescherin's Studio
exhibition "Nikolay Mescherin. Away from Vanity"



Tactile station for the exhibition "Place in the sun. Benkov / Fechin"
Tactile model of Nicolai Fechin's "Katenka",
fabric sample, fragment of the paint layer & the fragrance



Tactile station for the exhibition "Impressionism and Spanish art"
Tactile model of Ignasi Mallol's "Rose Bushes", tactile model of the boat & the fragrance



Invisible performance “The country of the blind”
director Pavel Artemiev, producer Timur Kaznov

created with the support of the program Special View of The Foundation Art Science And Sport



Tactile models of famous architectural monuments:
Notre Dame Cathedral, Taj Mahal, Chrysler Building







THANK YOU!

+7 977 549 22 53

Instagram @studioschu